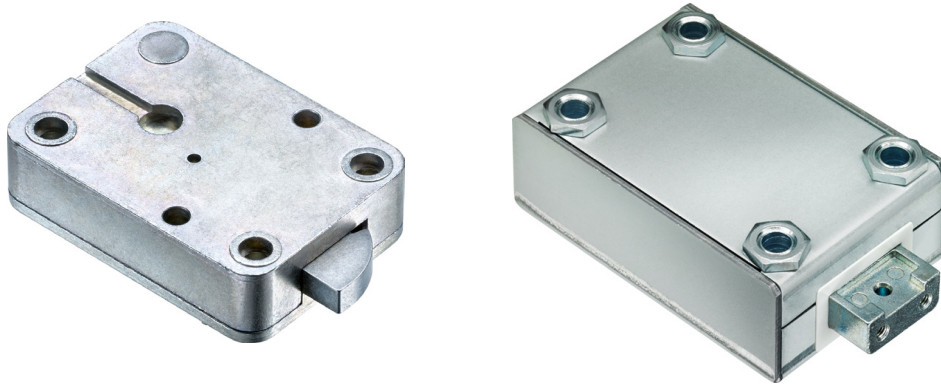


User's manual

Primor 1000 / 3000 / 3010/ Level 5



Content

1 General instructions	2
1.1 Liability notes	2
1.2 Operating notes	2
1.3 Notes on safety	2
1.3.1 Security notes emergency lock	2
2 Visual and acoustic signals	3
3 Input units	3
4 Operating the lock	3
4.1 Opening	3
4.2 Locking	3
4.3 Opening with key (Primor 3010) - emergency opening	4
5 Programming the lock	5
5.1 Master and user code	5
5.1.1 Programming the user code	5
5.1.2 Changing the master or user code	5
5.1.3 Deleting the user	5
5.2 Time delay and opening window	6
5.2.1 Adjusting the time delay and opening window	6
5.2.2 Opening with activated time delay and opening window	7
5.2.3 Deleting the time delay	7
6 Testing the system	8
7 Power supply and battery change	8

1 General instructions

- **Please read the operating instructions carefully, before activating the lock.**

1.1 Liability notes

- We don't assume liability for malfunctions due to incorrect operation, use of force or inappropriate handling. In cases of damage to property or valuables, which are due to incorrect locking of the safe, we also don't assume liability.
- If your safe, however, does not open correctly with the following instructions, please contact the manufacturer of the safe.

1.2 Operating notes

- Before operating the lock it has to be checked which input unit is combined with the lock.
 - The input unit RO got only one LED. It will not be considered separately in the following manual.
- Assess a person to administer the lock. This person will be the master. 1 user can be programmed.
- Programming can be done when the lock is opened or closed. For safety reasons we suggest you to do it while the lock is opened.
- If the lock is not opened or closed within 3 seconds after entering the code, the electronics switch off. Re-enter the code and repeat the process
- When the time between touching keys exceeds 10 seconds the process of programming and entering is deleted. The old code or programmes stay valid.
- Every correct input while entering the code is confirmed by an acoustic signal and flashing of the red LEDs. These signals will not be considered in this instruction.
- The red LEDs flash during the whole process of programming. These signals will not be considered in this instruction.
- Never use force.
- Do not open the lock case, otherwise you compromise the function of the lock and warranty will be void.

1.3 Notes on safety

- Due to security reasons change the factory code of 1 2 3 4 5 6 immediately.
- For your new code, do not use any personal data like birthdays or any other data, which could be known by knowledge of your person.
- Simple codes that can be guessed easily i.e. 1 2 3 4 5 6 must not be used.
- Your code has to be secret.
- Don't write down your code.
- Don't save your code on your PC, a DVD, a USB-stick or your mobile.
- Change your code frequently for example every three months.
- After entering the new code, the electronic lock should be opened and locked several times with the safe door opened.
- After each locking doublecheck if the safe is closed.

1.3.1 Security notes emergency lock

- Due to security reasons it is recommended not to leave the key unattended in the lock.
- Don't store the key in the safe.
- The keys have to be stored at a safe place and may only be accessible by authorized persons.
- When losing the key exchange the lock immediately.
- Make sure after each locking if the safe is locked.

2 Visual and acoustic signals

Signal	Explanation	Comment
✓	Right code	
✗	Wrong code or code denied	
■	Short signal	
▬	Long signal	
☀	LED flashes every 10 seconds	Blocking time is active.
	LED flashes every 2 seconds	Time delay is active.
■■■■■■■■■■	Battery warning	Battery should be changed soon.

3 Input units

Primor FE



Primor RO



Primor FL



Primor FS



4 Operating the lock

4.1 Opening

		✓	✗
1.	Enter the 6-digit code e.g. master code.	■■■	▬
2.	Turn the handle within 3 seconds into opening position. The lock is opened.		

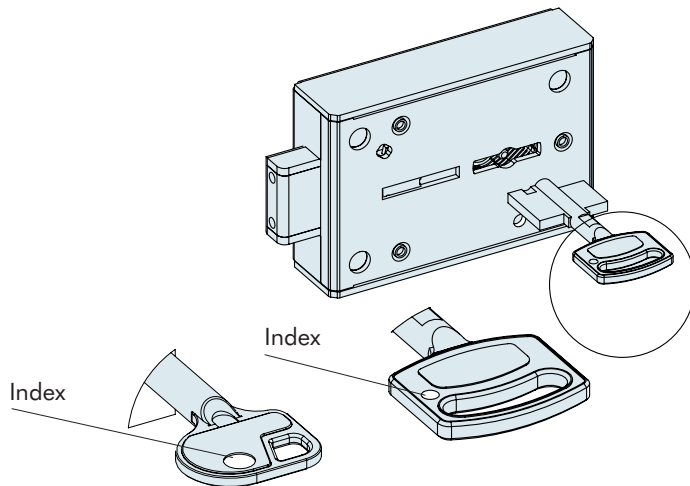
- After 4 consecutive wrong code inputs, a blocking time of 5 minutes occurs. During this blocking time the red LED flashes every 10 seconds and every input is accompanied by a long signal tone. After the blocking time has passed 2 further incorrect inputs will restart the blocking time.

4.2 Locking

1.	Close the door at the safe and turn the handle into locking position. The lock is closed.	
----	--	--

4.3 Opening with key (Primor 3010) - emergency opening

- In cases of code loss or an electronic malfunction, the lock can be opened with the key.
- When the lock was opened by the key, it can only be locked by it again.
- When the lock was opened by code, it cannot be closed with the key.
- Opening with the key bypasses a programmed time delay or blocking time
(The process will not be registered and cannot be read out by the PC software)



1.	Insert key so that the marking on the key head is pointing towards the lock's bolt.
2.	When using right-hand locks (turning axis towards the right) the key has to be turned clockwise. With left-hand locks counter-clockwise. The key lock is locked in the other direction.
3.	Removing of the key is only possible when lock is closed. The key has to be turned to a tight end.
4.	When turning the key do not use force (no auxiliary means). If jamming occurs contact qualified personnel.

5 Programming the lock

5.1 Master and user code

5.1.1 Programming the user code (programme 1)

The master is able to program the user code, but not vice versa.

			✓	✗
1.	Press and hold the key "1" until the red LEDs lights up permanently.	1	■ ■	■ ■
2.	Enter your 6-digit master code e.g.	1 2 3 4 5 6	■ ■	■ ■
3.	Enter the new 6-digit user code e.g.	1 1 1 1 1 1	■ ■	■ ■
4.	Re-enter the new 6-digit user code e.g.	1 1 1 1 1 1	■ ■	■ ■

- A new user code will be allowed only if the code is differing in two places by a single digit from an existing code.
- Should the new code be denied, restart the process of programming.

5.1.2 Changing the master or user code (programme 0)

			✓	✗
1.	Press and hold the key "0" until the red LEDs lights up permanently.	0	■ ■	■ ■
2.	Enter your old 6-digit code e.g. user code.	1 1 1 1 1 1	■ ■	■ ■
3.	Enter your new 6-digit code e.g.	5 6 7 8 9 1	■ ■	■ ■
4.	Re-enter your new 6-digit code e.g.	5 6 7 8 9 1	■ ■	■ ■

5.1.3 Deleting the user (programme 3)

The master is able to delete the user, but not vice versa.

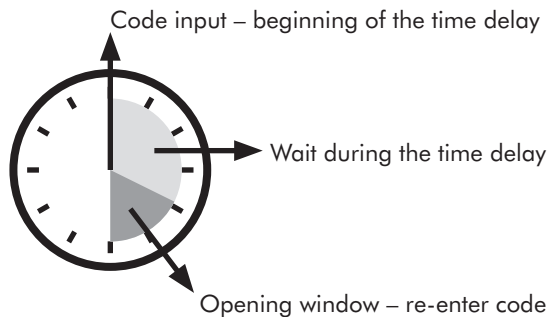
			✓	✗
1.	Press and hold the key "3" until the red LEDs lights up permanently.	3	■ ■	■ ■
2.	Enter your 6-digit master code e.g.	1 2 3 4 5 6	■ ■	■ ■

5.2 Time delay and opening window

Only the master can program or delete the time delay.

Time delay: 01 - 99 minutes - time to wait until the lock can be opened.

Opening window: 01 - 19 minutes - within this time window the master or the user can open the lock with his code.



5.2.1 Adjusting the time delay and opening window (programme 9)

			✓	✗
1.	Press and hold the key "9" until the red LEDs lights up permanently.	9	■ ■	■ ■
2.	Enter your 6-digit master code e.g.	1 2 3 4 5 6	■ ■	■ ■
3.	Enter the time delay e.g. 2 minutes.	0 2		
4.	Enter the opening window e.g. 10 minutes.	1 0	■ ■	■ ■
5.	Re-enter the time delay e.g. 2 minutes.	0 2		
6.	Re-enter the opening window e.g. 10 minutes.	1 0	■ ■	■ ■

- The time delay can be increased at any time. It can be reduced only during the opening window.

5.2.2 Opening with activated time delay and opening window

			✓	✗
1.	Enter your 6-digit code e.g. mastercode.	<input type="text" value="1"/> <input type="text" value="2"/> <input type="text" value="3"/> <input type="text" value="4"/> <input type="text" value="5"/> <input type="text" value="6"/>	■ ■	■ ■ ■ ■
2.	Wait until the end of the time delay.		☀	
3.	Opening window starts.		☀ ■	
4.	Re-enter your 6-digit code within the opening window e.g.	<input type="text" value="1"/> <input type="text" value="2"/> <input type="text" value="3"/> <input type="text" value="4"/> <input type="text" value="5"/> <input type="text" value="6"/>	■ ■	■ ■ ■ ■
5.	Turn the handle within 3 seconds into opening position. The lock is opened.			

- A commenced opening delay can be interrupted by pressing any key (wait for 10 seconds).
- The entering of an invalid code during release window cancels the opening process.
- The entering of a valid code during the opening delay will be confirmed has no effects.

5.2.3 Deleting the time delay (programme 9)

The time delay can only be deleted within the opening window.

The opening window runs after deleting the time delay for the last time.

			✓	✗
1.	Enter your 6-digit code e.g. mastercode.	<input type="text" value="1"/> <input type="text" value="2"/> <input type="text" value="3"/> <input type="text" value="4"/> <input type="text" value="5"/> <input type="text" value="6"/>	■ ■	■ ■ ■ ■
2.	Wait until the end of the time delay.		☀	
3.	Opening window starts.		☀ ■	
4.	Press and hold the key "9" until the red LEDs lights up permanently.	<input type="text" value="9"/>	■ ■	■ ■ ■ ■
5.	Enter your 6-digit master code e.g.	<input type="text" value="1"/> <input type="text" value="2"/> <input type="text" value="3"/> <input type="text" value="4"/> <input type="text" value="5"/> <input type="text" value="6"/>	■ ■	■ ■ ■ ■
6.	Delete the time delay .	<input type="text" value="0"/> <input type="text" value="0"/>		
7.	Delete the opening window .	<input type="text" value="0"/> <input type="text" value="1"/>	■ ■	■ ■ ■ ■
8.	Delete the time delay again.	<input type="text" value="0"/> <input type="text" value="0"/>		
9.	Delete the opening window again.	<input type="text" value="0"/> <input type="text" value="1"/>	■ ■	■ ■ ■ ■

6 Testing the system (programme 5)

Press every number once. A functional key will be confirmed by a double signal. A key that was not identified is confirmed by a long signal and the functional test is aborted. The system has to be checked.

			✓	✗
1.	Press and hold the key "5" until the red LEDs lights up permanently.	5	■ ■	—
2.	Press every key in its order of appearance.	1 2 3 9 0	■ ■	—

7 Power supply and battery change

The lock is power supplied by one 9 V block battery alkaline (no rechargeable batteries!). When battery voltage is insufficient, after entering the code a warning tone occurs repeatedly and the red LEDs flash alternately. Change the battery as quickly as possible. The programmed codes stay valid during battery change. Always dispose used batteries in an environmentally friendly way.

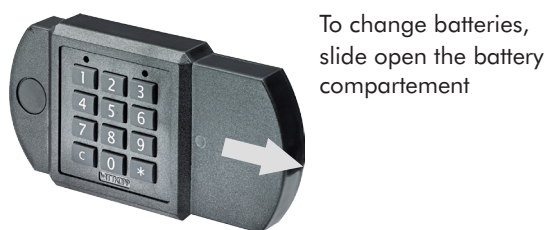


Fig. 1: Input unit Primor FE



Fig. 2.: Input unit Primor RO/FS



Fig. 3.: Input unit Primor FL/battery compartement